



Florida Department of
TRANSPORTATION

I-DRIVE & SAND LAKE ROAD CONSTRUCTION

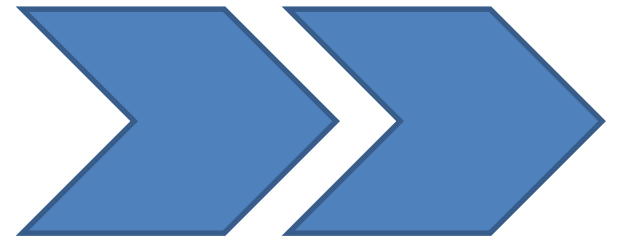
FPID: 407143-4-52-01

**International Drive from Jamaican Court to North of Sand Lake Road and
State Road 482 (Sand Lake Rd) from West of International Drive to Universal Blvd**



Florida Department of
TRANSPORTATION

CURRENT ACTIVITIES



14" Sanitary Force Main Removal on S I-drive



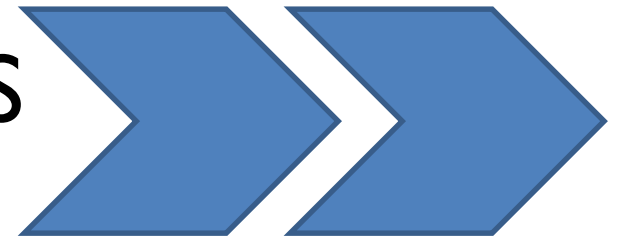
Water Main and Storm Sewer underground operations on EB Sand Lake.





Florida Department of
TRANSPORTATION

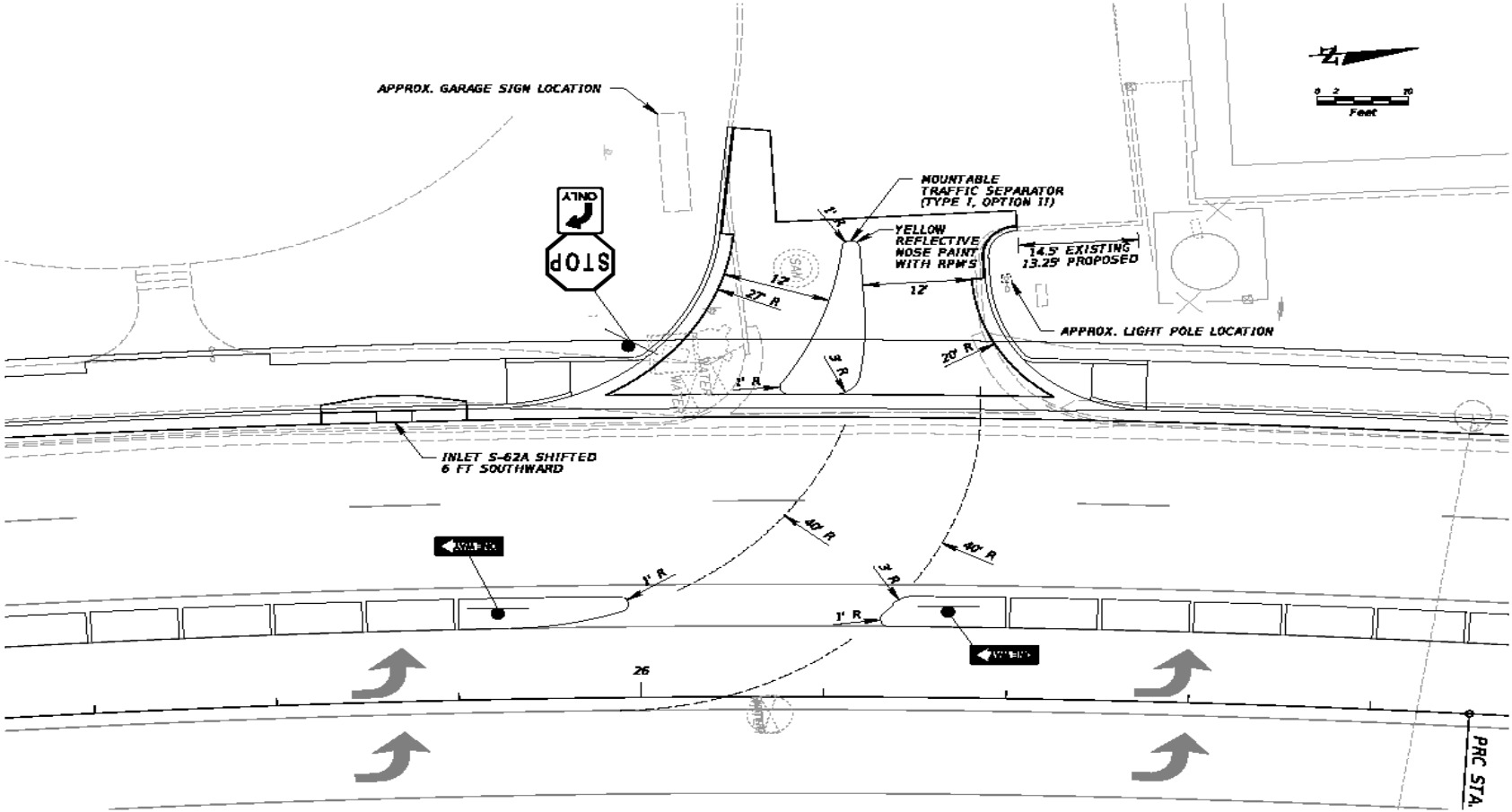
UPCOMING ACTIVITIES

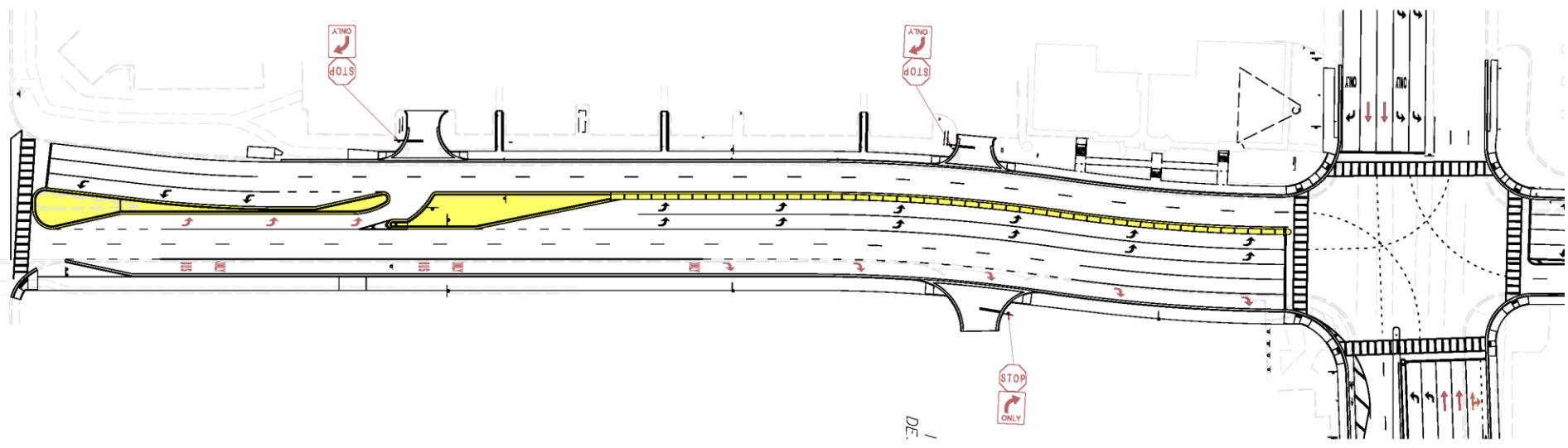


Storm sewer and roadway widening on S I-drive



Median opening for north Mangos driveway



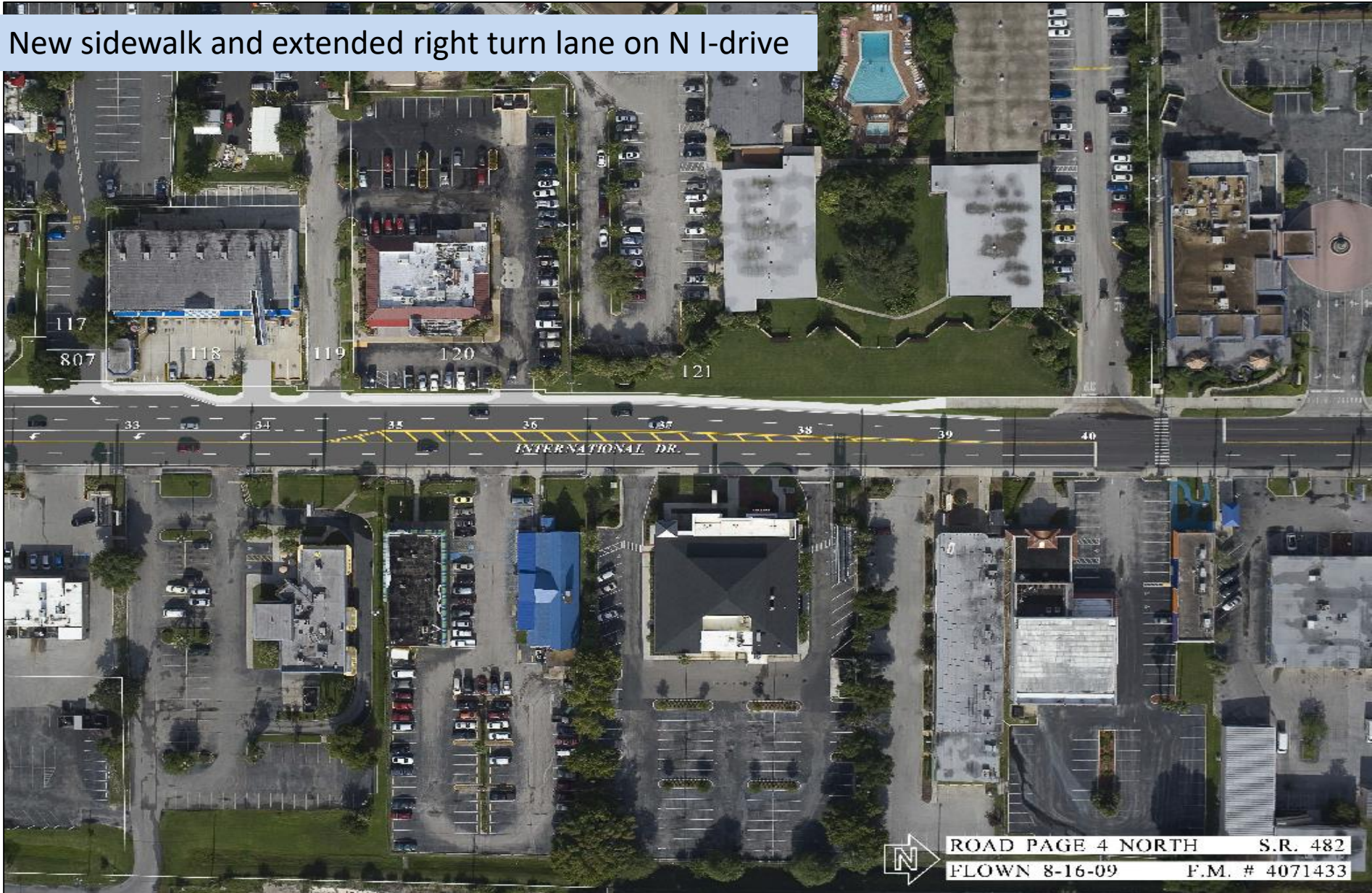


Lining Sanitary Gravity Sewer N I-drive

<https://www.youtube.com/watch?v=LtZnpEedsg0>



New sidewalk and extended right turn lane on N I-drive



ROAD PAGE 4 NORTH S.R. 482
FLOWN 8-16-09 F.M. # 4071433

Retaining wall, curb, sidewalk and roadway widening on EB SLR to create a third EB lane

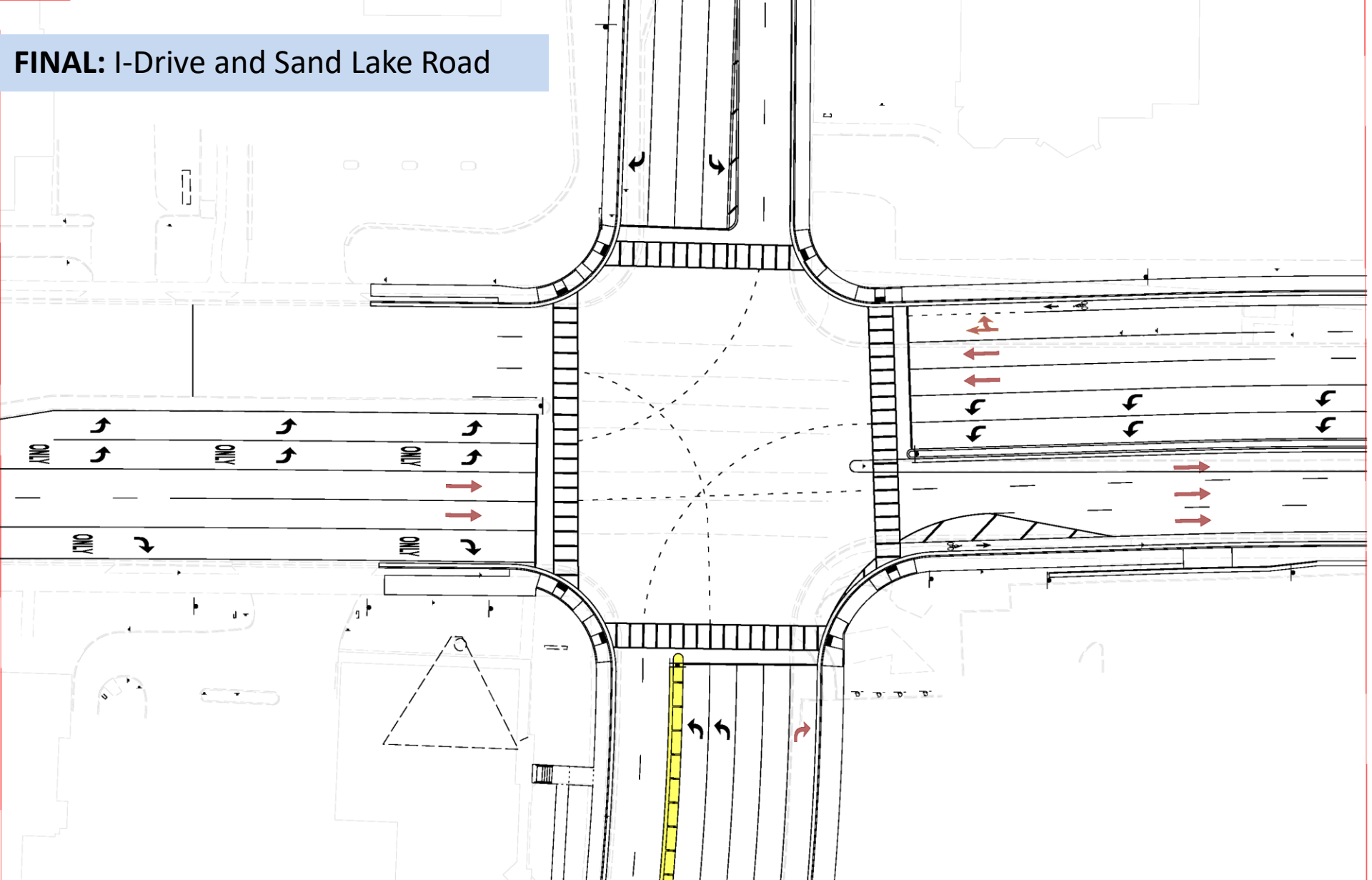


Sand Lake showing three lanes final configuration

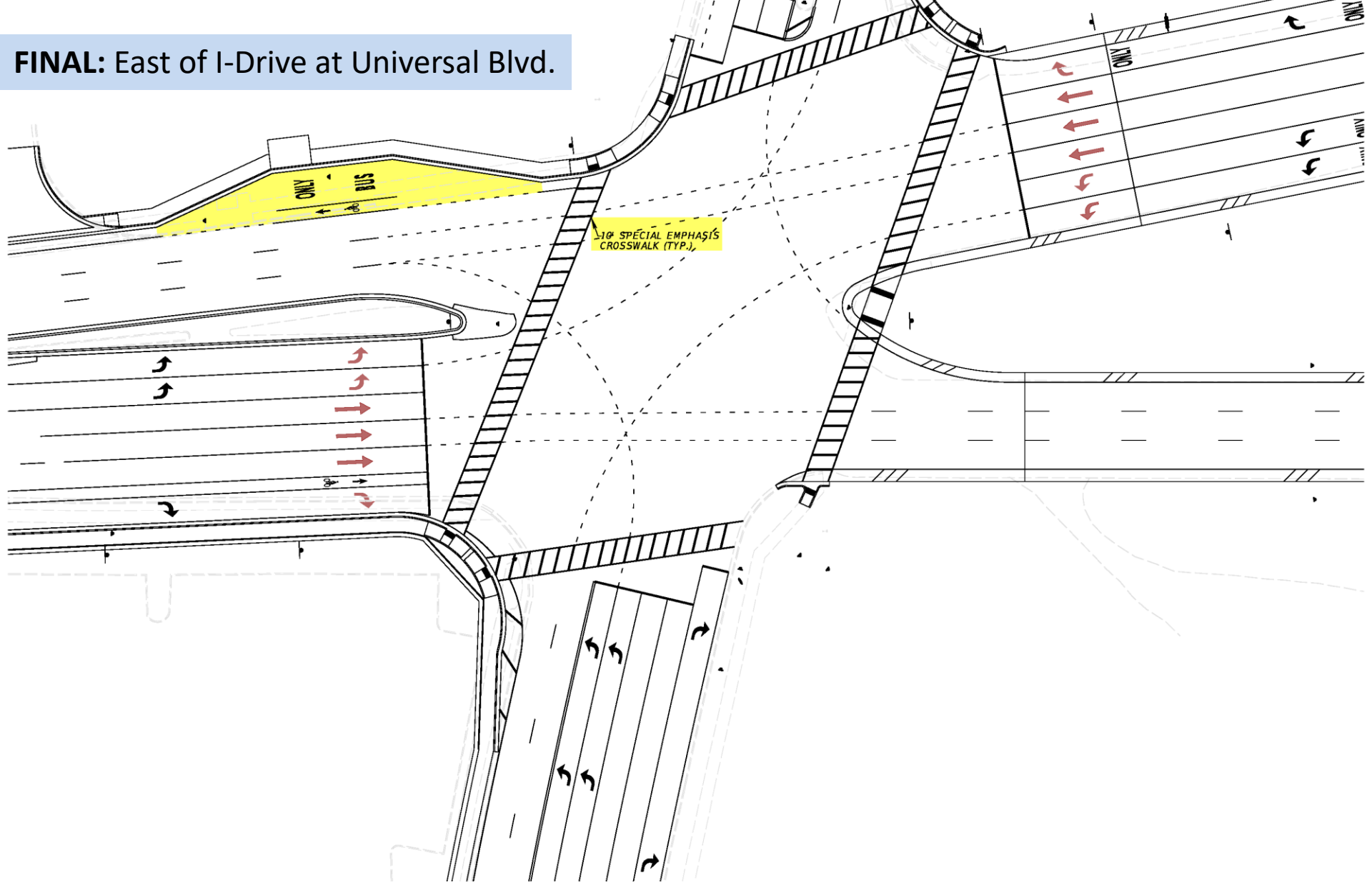


ROAD PAGE 5 F.M. # 4071433
FLOWN 8-17-09 S.R. 482

FINAL: I-Drive and Sand Lake Road



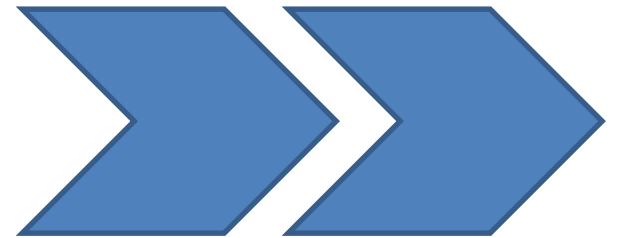
FINAL: East of I-Drive at Universal Blvd.





Florida Department of
TRANSPORTATION

BEFORE AND AFTER





Apr 10, 2018 9:44:34 AM
Orlando

Feb 12, 2018 8:10:15 AM
Orlando

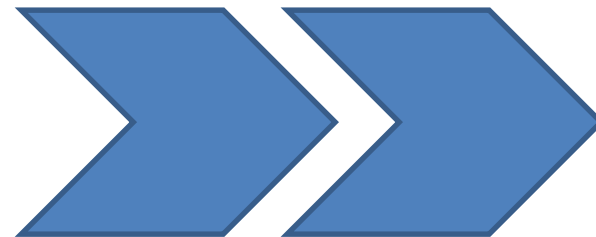


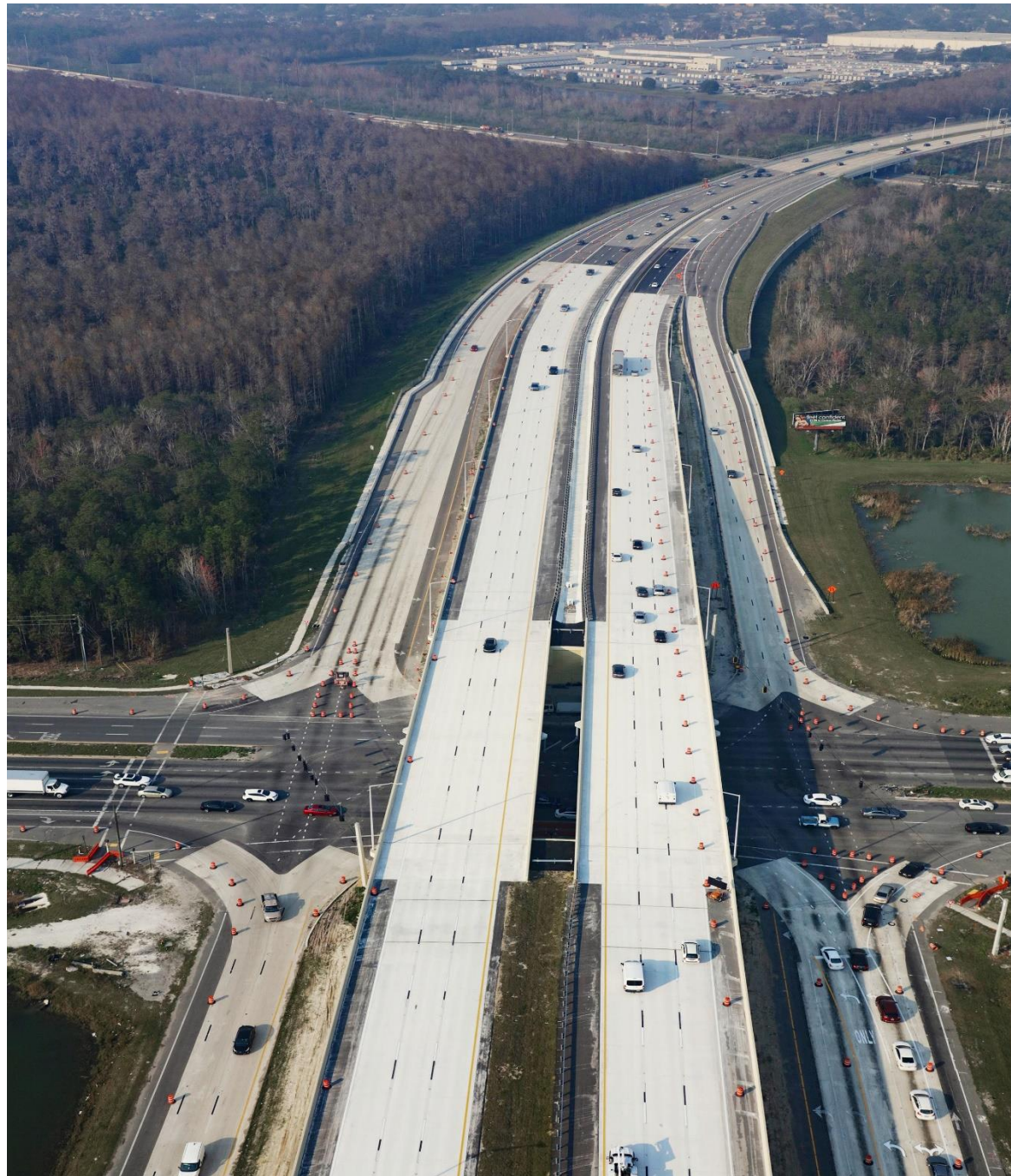




Florida Department of
TRANSPORTATION

JOHN YOUNG PKWY BRIDGE
OPENED JANUARY 19TH







Florida Department of
TRANSPORTATION

QUESTIONS?

